

THIS DRAWING IS UNPUBLISHED.

RELEASED FOR PUBLICATION

---

© COPYRIGHT - By -

ALL RIGHTS RESERVED.

LOC	DIST	REVISIONS					
FT	0	P	LTR	DESCRIPTION	DATE	DWN	APVD
			E	REVISED PER ECO-11-023401	01DEC11	KH	MS

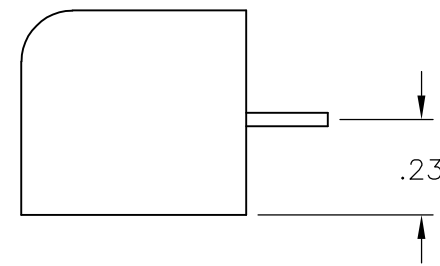
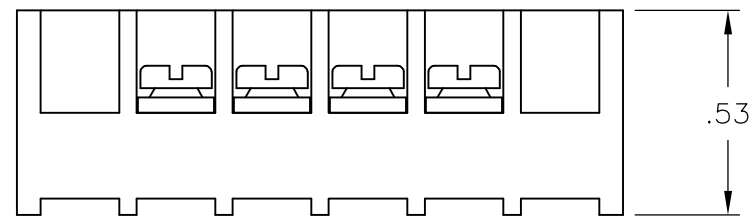
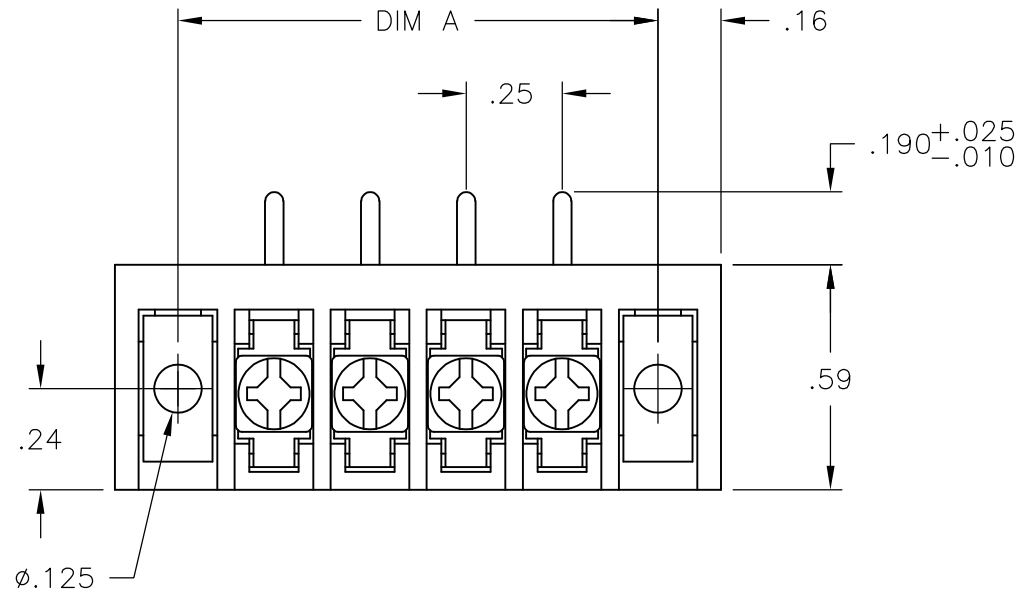
NOTES:

MATERIAL:  
 HOUSING: THERMOPLASTIC, UL94V-0, BLACK.  
 TERMINAL: BRIGHT TIN PLATED, COPPER ALLOY.  
 SCREWS: ZINC PLATED STEEL.

ELECTRICAL:  
 RATED CURRENT: 10A.  
 OPERATING VOLTAGE: 300V.  
 WIRE RANGE: 16-30 AWG.

MECHANICAL:  
 PITCH (TERMINAL SPACING): .250"  
 OPERATING TEMP.: 120°C MAX.

1 M3 SCREWS BOTTOMED.



7.75	28	3PCR-28-008	2-1546525-8
7.50	27	3PCR-27-008	2-1546525-7
7.25	26	3PCR-26-008	2-1546525-6
7.00	25	3PCR-25-008	2-1546525-5
6.75	24	3PCR-24-008	2-1546525-4
6.50	23	3PCR-23-008	2-1546525-3
6.25	22	3PCR-22-008	2-1546525-2
6.00	21	3PCR-21-008	2-1546525-1
5.75	20	3PCR-20-008	2-1546525-0
5.50	19	3PCR-19-008	1-1546525-9
5.25	18	3PCR-18-008	1-1546525-8
5.00	17	3PCR-17-008	1-1546525-7
4.75	16	3PCR-16-008	1-1546525-6
4.50	15	3PCR-15-008	1-1546525-5
4.25	14	3PCR-14-008	1-1546525-4
4.00	13	3PCR-13-008	1-1546525-3
3.75	12	3PCR-12-008	1-1546119-8
3.50	11	3PCR-11-008	1-1546525-1
3.25	10	3PCR-10-008	1-1546525-0
3.00	9	3PCR-09-008	1546525-9
2.75	8	3PCR-08-008	1546525-8
2.50	7	3PCR-07-008	1-1546119-1
2.25	6	3PCR-06-008	1546525-6
2.00	5	3PCR-05-303	2-1546525-9
2.00	5	3PCR-05-008	1546119-9
1.75	4	3PCR-04-008	1546525-4
1.50	3	3PCR-03-008	1546119-7
1.25	2	3PCR-02-008	1546525-2
DIM "A"	NO. OF POS.	CATALOG NUMBER	TE PART NO.

THIS DRAWING IS A CONTROLLED DOCUMENT.		DWN	S SCHLEGEL	4/17/03	<b>STE</b> TE Connectivity		
DIMENSIONS: INCHES		CHK	S. YODER	4/17/03			
TOLERANCES UNLESS OTHERWISE SPECIFIED:		APVD	S. YODER	4/17/03	NAME		
0 PLC ± -		PRODUCT SPEC		3PCR-XX-008 ASSEMBLY			
1 PLC ± -		APPLICATION SPEC		SIZE			
2 PLC ± .02		WEIGHT		CAGE CODE		DRAWING NO	
3 PLC ± .010		CUSTOMER DRAWING		A3 00779		G-1546119-7	
4 PLC ± -		SCALE		SHEET		RESTRICTED TO	
ANGLES ± 1°		NTS		1 OF 1		REV	
MATERIAL		FINISH		E			